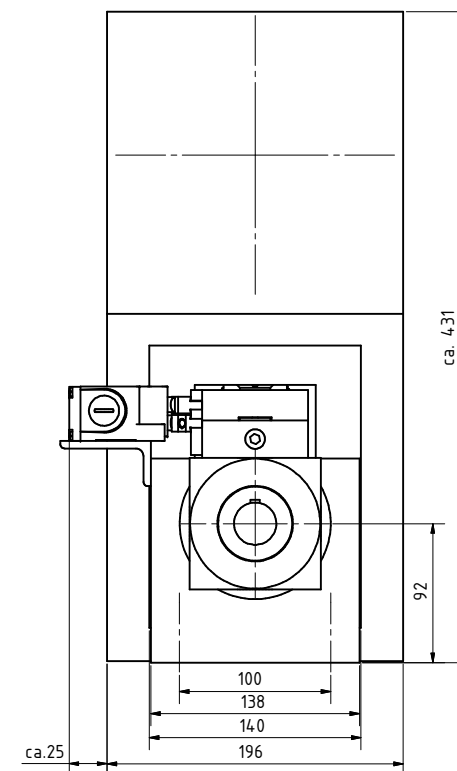
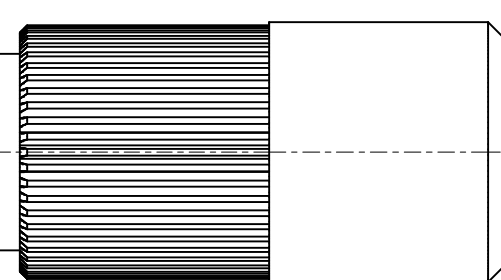
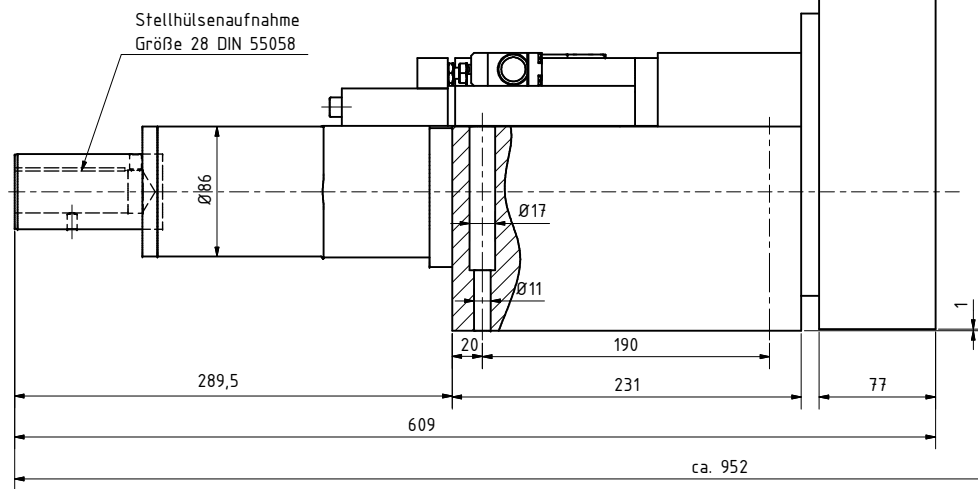


















( 1 : 5 )

Motor je nach Auslegung  
gezeichnet 1,5 Kw 930 U/min



Änderung vorbehalten

 <b>HAGEN &amp; GOEBEL</b> Werkzeugmaschinen GmbH Salzerweg 3    Tel. 02921/59016-0 D-59494 Soest    Fax. 02921/59016-66		Form- u. Lage toleranzen DIN ISO 1101	Allg. Toleranzen DIN ISO 2768-mK	Maßstab 1:2 / 1:5	Position	Menge
				Werkstoff:		
Oberflächenbeschaffenheit DIN ISO 1302 Reihe 3		Alle nicht benannten Kanten 0,5 x 45° gebrochen		Benennung <b>Maßblatt G20-50</b> Z-Laterne und Stellhülseaufnahme Gr. 28		
					Zeichnungs-Nr. <b>G01467-2-0</b>	
					Blatt 1	
					Bl.	
Kunde:				G20-50 Z-Laterne und Stellhülseaufnahme Gr. 28		
Kom:				G20-50 Z-Laterne und Stellhülseaufnahme Gr. 28		
Datum G01467-2-0 Maßblatt				G20-50 Z-Laterne und Stellhülseaufnahme Gr. 28		